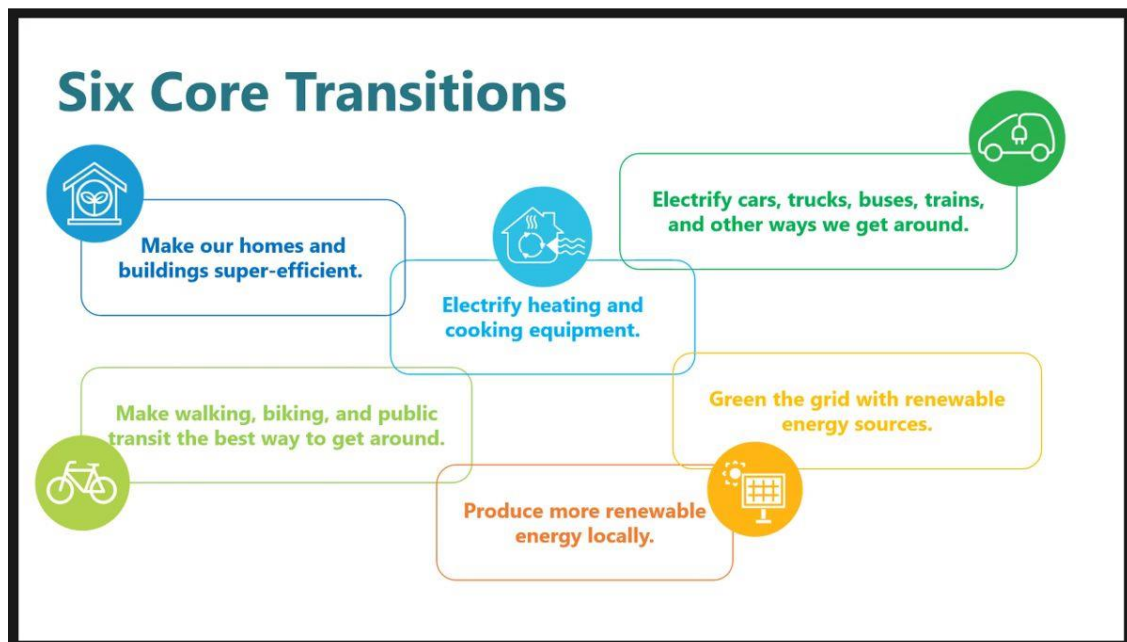




Preserving Our Past  
by Protecting Our Future

## Be a Net Zero Hero



Marblehead's Net Zero Roadmap, in near-final form, made its debut last Wednesday, February 15, at a virtual public meeting attended by more than 60 residents. Click [here](#) for a video recording of the meeting. To read the draft Roadmap and give final feedback via an online survey, go to [mapc.ma/Marblehead-roadmap](https://mapc.ma/Marblehead-roadmap).

The roadmap's recommendations to get Marblehead to net zero carbon emissions by 2040 cover six core transitions:

- Make our homes and buildings super-efficient.
- Electrify heating and cooking equipment.
- Electrify cars, trucks, buses, trains and other ways we get around.
- Make walking, biking and public transit the best way to get around.
- Produce more renewable energy locally.
- Green the grid with renewable energy sources.

Please take a few minutes to review the [Roadmap](#) to remember why it's so important to get to net zero, and to learn more about the Green Marblehead Committee's detailed recommendations.

Marblehead emits 161,130 metric tons of carbon dioxide equivalent per year, about average for a suburban community in our area according to the Metropolitan Area Planning Council, facilitator of our net zero planning. That works out to 7.8 MT CO<sub>2</sub>e per resident.

It will take considerable public and private investment to bring that number down. So, one resident's question at the end of the presentation struck a chord, "What happens if we don't take these actions?"

Brooks Winner of MAPC had some short-term answers. The town and its Municipal Light Plant could be fined if we don't meet state carbon reduction goals, and we would be leaving state and federal incentive dollars on the table if we don't apply for grants that encourage energy efficiency work. In addition, if we continue driving our internal combustion engine cars and heating with fossil fuel, we will soon be depending on outmoded technology.

That's the short-term answer. What he didn't say, but clearly believes along with Sustainable Marblehead, is that we need to make these changes in order to preserve the planet for future generations.

And, according to the recent New York Times article "[The Climate Impact of Your Neighborhood, Mapped](#)," carbon footprints are larger in suburban communities like Marblehead than in denser urban neighborhoods. Residents in these areas typically drive more and live in larger homes or apartments that require more energy to heat and cool. Wealth matters, too, according to the article. Higher-income households generate more greenhouse gases, on average, because wealthy Americans tend to buy more stuff – appliances, cars, furnishings, electronics – and travel more by car and plane, all of which come with related emissions. So, as a high emissions community, we have even more of an imperative to work on shrinking our carbon footprint.

The presentation on Wednesday had advice on how to be a "Net Zero Hero": Share your voice, get involved, and act on choices within your control (e.g. complete an energy audit, insulate your home, go solar, switch to clean heating, make your next car electric) and participate in the local and state programs available to support you.

Sustainable Marblehead also offers resources and programs to help you take action to reduce your carbon footprint.

### [Why Take Action?](#)

---

## Searching for a New Executive Director



Sustainable Marblehead's Board of Directors is looking for a passionate and talented volunteer to become our next executive director. If you are a Marblehead resident with strong leadership, communication and organizational skills, we would love to hear from you!

The ideal candidate is enthusiastic and self-directed with strong written and verbal communications skills. Previous experience in nonprofit leadership, development and/or event planning is helpful.

If you are interested, please send a cover letter and resume to [governance@sustainablemarblehead.org](mailto:governance@sustainablemarblehead.org).

[Executive Director Job Description](#)

---

## Native Perennial Seed Stratification



On February 7, 2023, Sustainable Marblehead member and Tower School science teacher Colleen Parenteau and her sixth-grade students met at the Tower School with members of Marblehead's Winter Garden Club to do an in-person training on how to harvest, store, stratify and sow native plant seeds in pots.

Most of the seeds were harvested by members of the Sustainable Marblehead Conservation Group's Pollinator Corridor team from the native plant project at Glover Landing last year. At Glover Landing, although most of the plants grew very well, it turned out many residents preferred the original annuals in the planters outside their doors instead of perennials. The pollinator group decided that the perennials would do better in the ground and, after maintaining the planters until it was time to transplant, harvested seeds by deadheading.

At the training session, Tower School students presented on native perennial seed

stratification – the process of giving seeds a period of “cold” to prepare them for better germination. If gardeners don’t stratify seeds, they can still germinate, but the rate is often much lower and seeds can actually take two or three times longer to germinate.

About 18 members of the Winter Garden Club attended the training session and were enthusiastic about what they learned.

Club President Vonda Raisides said, “The students were so well spoken, knowledgeable and proud – it was great to be able to chat with them while we planted seeds. We very much appreciate all of the time and effort invested in the workshop, and want to thank Sustainable Marblehead not only for their efforts, but also for sharing with us. I am confident that the information will be utilized and our gardens will flourish with local pollinators for years to come!”

- [Read the complete presentation](#)

---

## Conservation Group Completes 1,000 Ecobricks



In June 2020, Sustainable Marblehead’s Conservation group received a request from Nathan Gray ([www.PlasticRecycled.com](http://www.PlasticRecycled.com)) asking if we might like to make some “Ecobricks” (basically empty plastic bottles stuffed with clean plastic film).

We had just begun the project when COVID hit. Because of the COVID quarantine, we started meeting outside weekly, usually at group member

Starr Campbell's house, sorting plastic and stuffing bottles.

After the quarantine, we were invited to meet indoors at MacRae's Sustainable Goods at 108 Washington St. in Marblehead.

**And on November 22, 2022, we completed our 1,000th brick!!!**

How it's done:

1. Start with a 16 to 20 ounce plastic bottle, 7 to 9 inches tall, clean and dry.
2. Stuff (as tight as possible) with clean/dry plastic film, for example, newspaper bags, grocery bags, plastic wrappings and the like.

Completed bricks must weigh AT LEAST 5 ounces, and can be dropped off at MacRae's or at the Transfer Station by the plastic recycling bin. Completed bricks only, no loose plastic.

Bricks are picked up by Nathan Gray, who informs us that these "bricks" can be used as an alternative building material in a multitude of construction projects including building furniture and creating art installations.

[Learn more about ecobricks at our webinar.](#)

---



## Landscape Donation Site

Do you have a favorite teacher, organization, mentor or family member whom you think deserves recognition? Did you request a memorial bench for someone after the moratorium on benches was imposed? Are you eager to support new landscaping projects that provide beauty and shade while reducing heat loads, carbon emissions, air pollution and storm runoff?

We have a great opportunity for you. The Recreation and Parks Department has a site for your donations at



[www.mhdlandscape.org/](http://www.mhdlandscape.org/) . This donation fund, created in collaboration with Sustainable Marblehead's Town Trees and Urban Forestry Working Group, will give the Marblehead community an opportunity to support landscaping projects with native tree and shrub plantings on our park and school grounds.

These landscaping projects will include both the design and execution to plant native bushes, shrubs, and flowers. Plaques will be placed honoring the names provided with the donations. While Recreation and Parks will prepare the site, community volunteers will help plant – another great opportunity to beautify Marblehead's green spaces!



### **Tree Donation Fund**

Every April, Sustainable Marblehead collaborates with Marblehead's Tree Warden Jon Fobert to plant street trees where they're most needed. Fobert uses the town's Tree Donation Fund to buy the bare root trees.

If you would like to see more town trees planted along our streets, to beautify our town and shade sidewalks and passersby from the summer heat, please give generously. With spring around the corner, now is the best time to donate.

It's easy: simply write a check made out to the Town of Marblehead with "Tree Donation" in the memo line and send it or drop it off at the Marblehead Tree Department, Attn: Tree Donation Fund, 3 Tower Way, Marblehead, MA 01945.

For more information, click [here](#).

---

## Upcoming Events



## **Sustainable Marblehead Green House Tour -- Save the Date!**

Saturday, April 8, 2023, 10am - 2pm

Looking to improve your home's energy efficiency?

Join us to tour open homes in Marblehead and find out from homeowners about energy efficient technologies they have installed:

- Air source heat pumps for heating and cooling
- Solar panels
- Electric vehicle chargers
- Electric induction stoves

- Tankless and heat pump hot water heaters
- Upgraded insulation
- Automated connected homes

You'll save energy, save money and protect the planet.

---

# Ask Chip: Your Gardening Questions Answered in Two Sessions



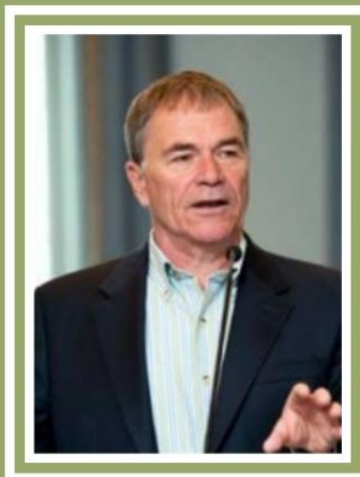
**Pesticides 101:  
Wednesday  
March 29 4:30pm**

**Green Lawncare:  
Tuesday  
April 25 4:30pm**



**Chip Osborne**

President of Osborne  
Organics & past Chairman  
of Marblehead Recreation  
and Parks Commission



**Ask Chip: Your Gardening Questions Answered in Two Sessions**



Pesticides 101: Wednesday, March 29, 2023, 4:30 pm

Green Lawncare: Tuesday, April 25, 2023, 4:30 pm

Learn why you can no longer wait to provide a safer and healthier landscape by using no pesticides, and how to move turf and landscapes from conventional management to a natural approach.

**Save the dates!**

---



#### Did You Know?

Thanks to “fast fashion,” 60 percent of clothes are thrown out within a year of purchase. Because so many are made from polyester or acrylic, that's no different from throwing away plastic.

Making "plastic" clothes requires 342 million barrels of oil a year. A 2020 Intergovernmental Panel on Climate Change report said the fashion industry is responsible for 10 percent of global greenhouse gas emissions.

---



## What Can You Do?

Swear off fast fashion. Spend more to buy less. Familiarize yourself with brands and designers that prioritize eco-friendly and ethical practices. Shop secondhand. Don't buy online, if possible, to avoid the waste caused by shipping, including free returns.

Take care of your clothes. And consider the end. Donate your clothes, sell them on an online marketplace, organize a swap with friends, or turn old outfits into cleaning rags.

Click [here](#) for more on what to do with old clothes.

---

## Support

Sustainable Marblehead is a community organization working to reduce waste and achieve net-zero carbon emissions by 2040. Our work is important, and we can't do it alone. Please join us by donating today.

[Donate Today](#)

---

Special thanks to our Community Champion Sponsors



*Copyright © 2023 Sustainable Marblehead, All rights reserved.*

---

This email was sent to [lbyarmoff@gmail.com](mailto:lbyarmoff@gmail.com)

[why did I get this?](#) [unsubscribe from this list](#) [update subscription preferences](#)

Sustainable Marblehead · P.O. Box 1320 · Marblehead, MA 01945 · USA

